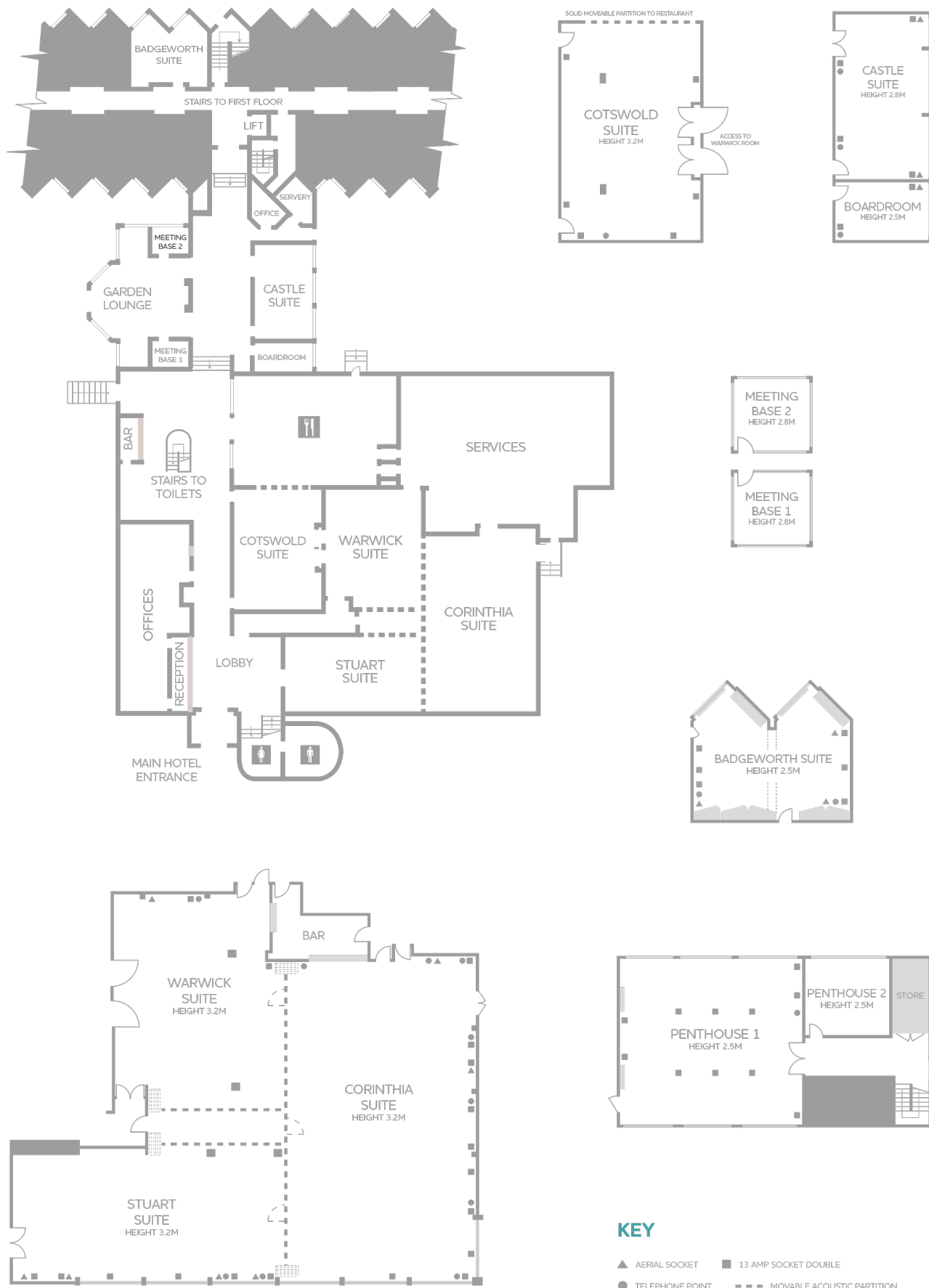


# Leonardo Hotel Cheltenham

## Floorplans and Capacities

# Floor Plans



# Room Capacities

	Theatre	Theatre (Back Projection)	Classroom	Boardroom	U-Shape	Cabaret (Full rounds)	Cabaret (Half rounds)	Banquet	Dinner Dance	Length (m)	Width	Height	Controls in Room	Tungsten	Dimmers	Blackout	Natural Light	3 Phase	Air Conditioning	Free WiFi
Executive Suite	400	350	180	90	90	240	180	320	300	31.9	19.1	3.2	✓	-	✓	-	✓	-	✓	✓
Corinthia Suite	230	180	64	50	58	96	72	150	130	17.2	9.98	3.2	✓	-	✓	-	✓	-	✓	✓
Warwick Suite	75	-	45	40	35	40	30	60	50	11.4	9.1	3.2	✓	-	✓	-	-	-	✓	✓
Stuart Suite	100	50	40	30	30	56	35	80	70	14.7	7.32	3.2	✓	-	✓	-	✓	-	✓	✓
Cotswold Suite	60	-	40	30	30	48	30	50	30	11.5	8.23	3.2	✓	-	✓	-	-	-	✓	✓
Boardroom	8	-	-	8	-	-	-	-	-	5	3.05	2.8	✓	-	-	-	✓	-	✓	✓
Castle Suite	40	-	20	22	20	21	18	-	-	8.6	5	2.8	✓	-	✓	-	✓	-	✓	✓
Badgeworth Suite	30	-	16	14	12	21	18	-	-	8.25	4.24	2.8	✓	-	-	-	✓	-	✓	✓
Meeting Base 1	-	-	-	5	-	-	-	-	-	3.46	2.27	2.8	✓	-	-	-	-	-	✓	✓
Meeting Base 2	-	-	-	5	-	-	-	-	-	3.46	2.27	2.8	✓	-	-	-	-	-	✓	✓
Penthouse 1	40	-	27	20	30	32	20	-	-	8.95	8.3	2.5	✓	-	✓	-	✓	-	✓	✓
Penthouse 2	8	-	4	6	-	-	-	-	-	4.2	3.58	2.5	✓	-	-	-	✓	-	✓	✓

# Leonardo Hotel Cheltenham

**For Meeting Enquiries**

Tel: 0845 525 6338- Email [meet@leonardohotels.com](mailto:meet@leonardohotels.com)

**For other enquiries, contact the hotel directly**

Leonardo Hotel Cheltenham, Gloucester Road,  
Cheltenham, GL51 0TS

Tel: +44 0871 376 9013 Email: [cheltenham\\_conference@leonardohotels.com](mailto:cheltenham_conference@leonardohotels.com)